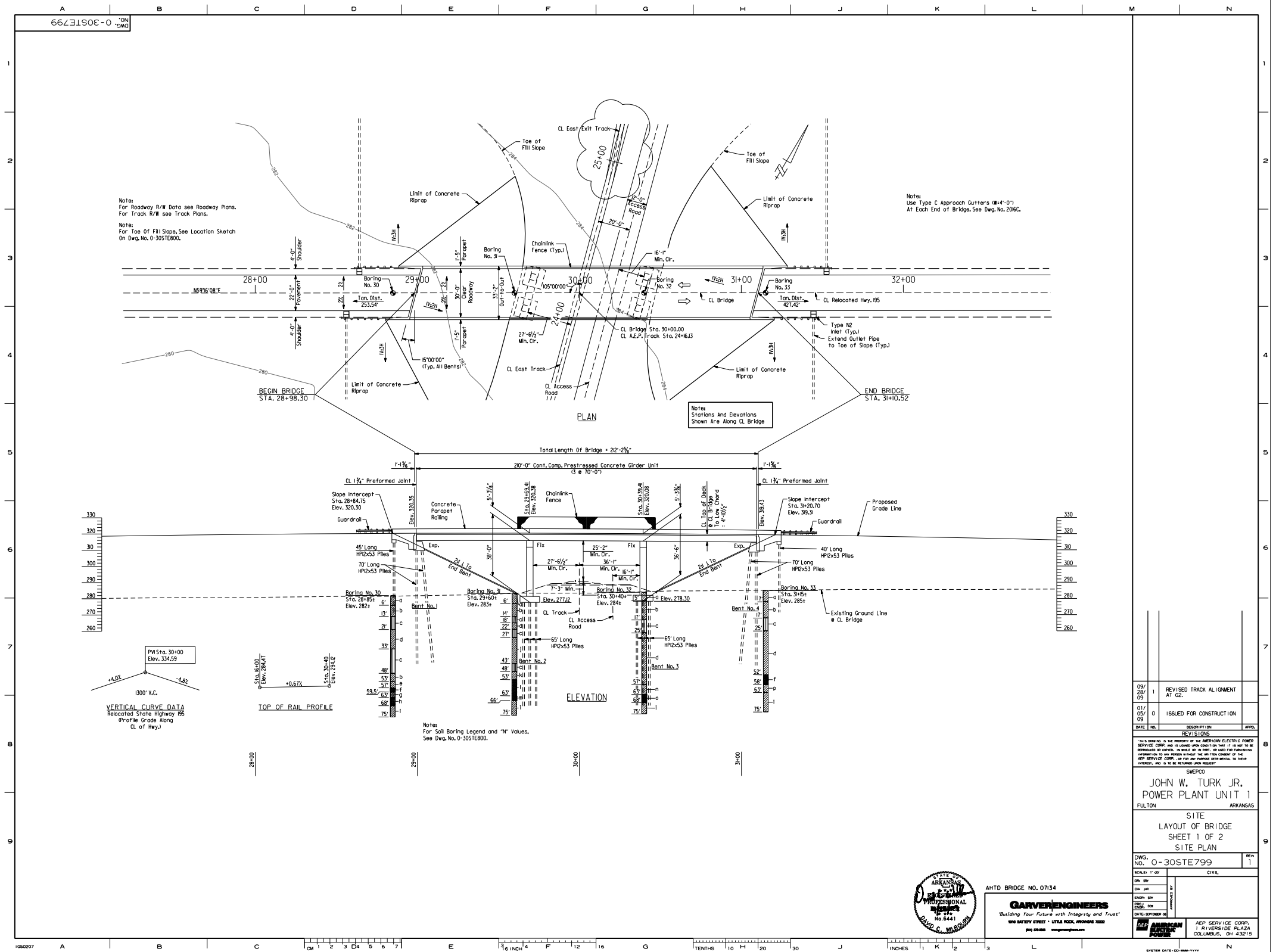


HEMPSTEAD COUNTY, ARKANSAS

SYSTEM DATE - DD-MMM-YYYY N

(NOTE: EAST TRACK COMPRISED OF DUAL TRACKS STA. 24+88.70 TO STA. 46+29.27





GENERAL NOTES

BENCH MARK TBM PL 6, 3/4" Rebar And Cap, 36.07 Ft. Of Sta 30+53.34 Elev. 284.69

CONSTRUCTION SPECIFICATIONS: Arkansas State Highway And Transportation Department Standard Specifications For Highway Construction (2003 Edition) With Applicable Supplemental Specifications And Special Provisions, Unless Otherwise Noted In The Plans, Section And Subsection Refer To The Standard Construction Specifications.

DESIGN SPECIFICATIONS: AASHTO LRFD Bridge Design Specifications (4th Edition) With Current Interim Specifications.

LIVE LOADING: HL93

SEISMIC PERFORMANCE ZONE: I

MATERIALS AND STRENGTHS:
Class (SAC) - Bridge Concrete (Superstructure) f'c = 4000 psi
Class S - Bridge Concrete (Substructure) f'c = 3500 psi
Class S - Bridge Concrete (Girder) f'c = 6000 psi
Reinforcing Steel (AASHTO M 310 - M 53, GR. 60) fy = 60,000 psi
Structural Steel (AASHTO M 270, GR. 50W) Fy = 50,000 psi

STEEL PILING: Piling at End Bents 1 & 4 shall be HP12 x 53 and shall be driven to a minimum safe bearing capacity of 70 tons. Piling at Bents 2 & 3 shall be HP12 x 53 and shall be driven to a minimum safe bearing capacity of 65 tons. All piling shall be driven with an approved air, steam or diesel hammer with a minimum rated energy of 15,000 Ft.-Lbs. The piling at End Bents 1 & 4 shall have a minimum penetration of 10' below natural ground. Minimum penetration for piling at Bents 2 & 3 shall be 10' below bottom of footing. Lengths shown are for estimating quantities and for use in determining payment for cut-off and build-up in accordance with the Standard Specifications. Piles in end bents to be driven after embankment to bottom of cap is in place. Drive one test pile at each abutment and interior bent. Test piles shall be 10' longer than lengths shown on plans. The contractor shall use approved steel H-Pile driving points on interior bent piles only.

PREBORING: Preboring, Jetting, Or Other Methods As Approved By The Engineer May Be Required To Obtain The Minimum Penetration Requirements. If Required, The Actual Size And Depth Of Preboring Or Depth Of Jetting Will Be Determined By The Engineer. The Contractor Shall Be Responsible For Keeping The Prebored Holes Free From Debris Prior To Backfilling Which May Require The Use Of Temporary Castings Or Other Methods. The Cost Of Temporary Castings And The Preboring Or Jetting, If Required, Will Not Be Paid For Directly But Will Be Considered Subsidiary To "Steel Piling".

BRIDGE DECK: The Concrete Bridge Deck Shall Be Given A Fine Finish As Specified For Final Finishing In Subsection 802.09 For Class 5 Tined Bridge Roadway Surface Finish.

PROTECTIVE SURFACE TREATMENT: Class I Protective Surface Treatment Shall Be Applied To The Roadway Surface And To The Roadway Face And Top Of The Concrete Parapet Wall.

FOOTINGS: The Top Of Footings Shall Be Set A Minimum Of 2'-0" Below Finished Ground. Foundations For Footings Shall Be Prepared In Accordance With Section 801.04 And Backfilled In Accordance With Section 801.08.

DETAIL DRAWINGS:

General Notes
Layout Of Bridge
Abutment
Interior Bents
20' Cont. Prestressed Conc. Girder Unit
AASHTO Type III Prestressed Conc. Girder Details
Elastomeric Bearings
Embankment Construction And Backfill At Bridge Ends
Computing Excavation For Structures
Type C Approach Gutters
Type C Bridge Name Plate
Permanent Steel Bridge Deck Forms
Misc. Details Of Steel Piling

DRAWINGS NO.:

0-30STE798
0-30STE799 - 0-30STE800
0-30STE802 - 0-30STE805
0-30STE806
0-30STE807 - 0-30STE813
0-30STE814 - 0-30STE815
0-30STE816
1888A
1896
206C
2389A
1499
1499SA

SOIL BORING LEGEND

- a Firm Tan and Gray Clay W/Organic Stains and Occasional Roots
b Reddish Tan and Gray
c Stiff To Very Stiff Reddish Brown Clay, Blocky W/Organic Stains. Stiff With Tan Silt Pockets.
d Medium Dense Tan and Reddish Brown Silt
e Very Stiff Reddish Brown Clay, Blocky W/Tan Silt Pockets and Seams
f Stiff Tan and Gray Fine Sandy Clay
g Dense Gray Silty Fine Sand W/ A Little Fine Gravel
h Very Stiff Tan Clayey Silt
i Medium Dense Tan and Gray Silty Fine Sand W/ Some Fine Gravel
j Hard Gray Clay, Calcareous W/ Calcareous Nodules
k Stiff Reddish Brown Clay W/Tan Silt Seams and Pockets
l Very Stiff Reddish Brown Clay, Blocky W/ Occasional Calcareous Nodules
m Loose To Medium Dense Tan Clayey Fine Sand
n Medium Dense, Gray
o Medium Dense Tan and Gray Silty Fine To Coarse Sand
p Stiff Gray Clay, Blocky W/ Clayey Fine Sand Pockets and Partings
q Medium Dense Gray Clayey Fine To Coarse Sand W/ A Little Fine Gravel
r Very Stiff To Hard Reddish Brown and Tan Sandy Clay W/ Some Fine Gravel

"N" VALUES

Sta. 28+85	Sta. 29+60	Sta. 30+40	Sta. 31+5
CL OF Highway	CL OF Highway	CL OF Highway	CL OF Highway
19.0-20.0, N=27	19.0-20.0, N=27	19.0-20.0, N=26	24.0-25.0, N=35
24.0-25.0, N=26	24.0-25.0, N=26	24.0-25.0, N=50/11"	39.0-40.0, N=27
29.0-30.0, N=23	29.0-30.0, N=23	29.0-30.0, N=38	44.0-45.0, N=30
34.0-35.0, N=18	34.0-35.0, N=25	34.0-35.0, N=30	49.0-50.0, N=28
39.0-40.0, N=18	39.0-40.0, N=23	39.0-40.0, N=29	54.0-55.0, N=54
44.0-45.0, N=19	44.0-45.0, N=14	44.0-45.0, N=25	59.0-60.0, N=54
49.0-50.0, N=15	49.0-50.0, N=30	49.0-50.0, N=24	64.0-65.0, N=25/0"
54.0-55.0, N=16	54.0-55.0, N=10	54.0-55.0, N=21	68.0-69.0, N=25/0"
59.0-60.0, N=10	59.0-60.0, N=23	59.0-60.0, N=11	73.0-74.0, N=25/0"
64.0-65.0, N=21	64.0-65.0, N=16	64.0-65.0, N=16	
68.0-69.0, N=25/0"	68.0-69.0, N=25/0"	68.0-69.0, N=50/6"	
73.0-74.0, N=25/0"	73.0-74.0, N=25/0"	73.0-74.0, N=25/0"	

LOCATION SKETCH

DATE	NO.	REVISIONS	APPROVED
09/28/09	1	REVISED TRACK ALIGNMENT AT GE.	
01/09/09	0	ISSUED FOR CONSTRUCTION	

"THIS DRAWING IS THE PROPERTY OF THE AMERICAN ELECTRIC POWER SERVICE CORP. AND IS LOANED UNDER AGREEMENT THAT IT IS NOT TO BE REPRODUCED OR COPIED, IN WHOLE OR IN PART, OR USED FOR REPRODUCING OR FOR ANY OTHER PURPOSE WITHOUT THE WRITTEN CONSENT OF THE AEP SERVICE CORP. OR FOR ANY PURPOSES DETERMINED BY THEM TO BE INTERESTS, AND IS TO BE RETURNED UPON REQUEST."

SMEPCO
JOHN W. TURK JR.
POWER PLANT UNIT 1
FULTON ARKANSAS

SITE
LAYOUT OF BRIDGE
SHEET 2 OF 2
SITE PLAN

DWG. NO. 0-30STE800

SCALE: 1"=20'

DATE: SEPTEMBER 08

REVISION 1

AEP SERVICE CORP.
1 RIVERSIDE PLAZA
COLUMBUS, OH 43215

SYSTEM DATE: 09-28-2009
SYSTEM TIME: 10:00:00

1080207

16 INCH

TENTHS

INCHES

1

2

3

4

5

6

7

8

9

10

11

12

13

14

15

16

17

18

19

20

21

22

23

24

25

26

27

28

29

30

31

32

33

34

35

36

37

38

39

40

41

42

43

44

45

46

47

48

49

50

51

52

53

54

55

56

57

58

59

60

61

62

63

64

65

66

67

68

69

70

71

72

73

74

75

76

77

78

79

80

81

82

83

84

85

86

87

88

89

90

91

92

93

94

95

96

97

98

99

100

101

102

103

104

105

106

107

108

109

110

111

112

113

114

115

116

117

118

119

120

121

122

123

124

125

126

127

128

129

130

131

132

133

134

135

136

137

138

139

140

141

142

143

144

145

146

147

148

149

150

151

152

153

154

155

156

157

158

159

160

161

162

163

164

165

166

167

168

169

170

171

172

173

174

175

176

177

178

179

180

181

182

183

184

185

186

187

188

189

190

191

192

193

194

195

196

197

198

199

200

201

202

203

204

205

206

207

208

209

210

211

212

213

214

215

216

217

218

219

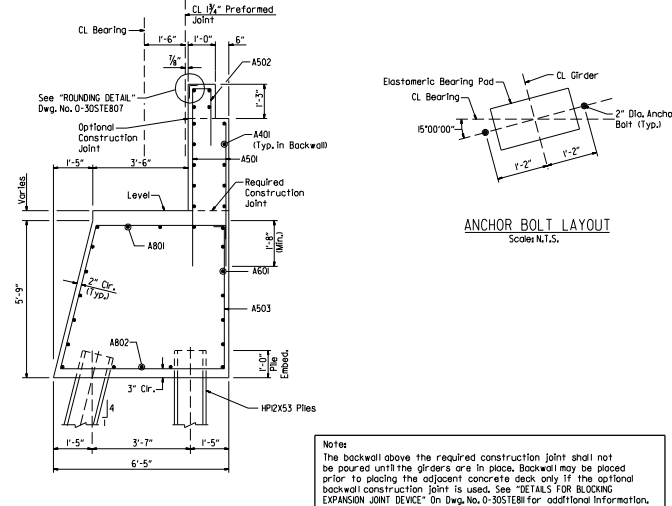
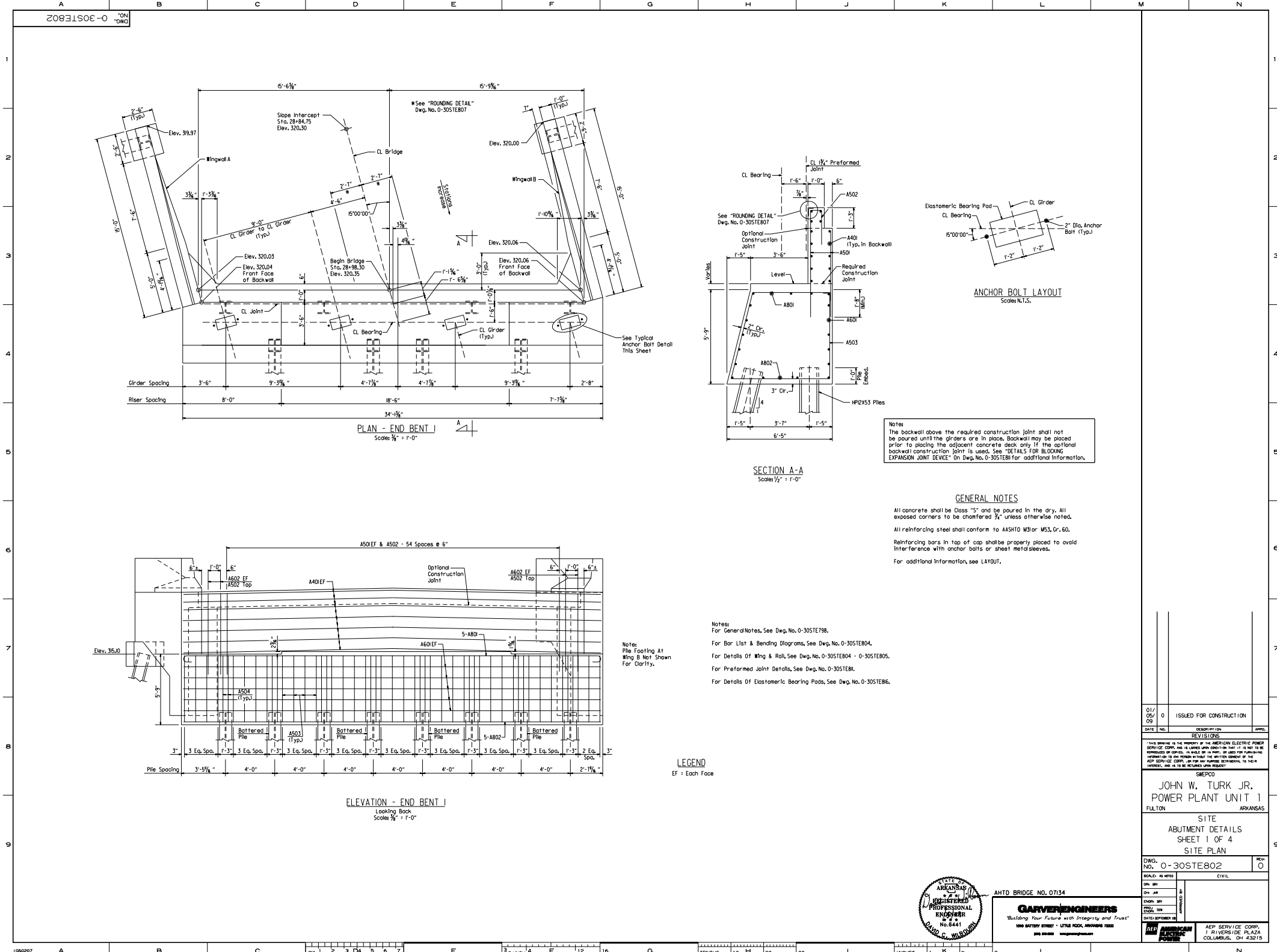
220

221

222

223

22



Notes:
The backwall above the required construction joint shall not be poured until the girders are in place. Backwall may be placed prior to placing the adjacent concrete deck only if the optional backwall construction joint is used. See "DETAILS FOR BLOCKING EXPANSION JOINT DEVICE" on Dwg. No. 0-30STEB1 for additional information.

GENERAL NOTES
All concrete shall be Class "5" and be poured in the dry. All exposed corners to be chamfered $\frac{3}{4}$ " unless otherwise noted.
All reinforcing steel shall conform to AASHTO M31 or M53, Gr. 60.
Reinforcing bars in top of cap shall be properly placed to avoid interference with anchor bolts or sheet metal sleeves.
For additional information, see LAYOUT.

Notes:
For General Notes, See Dwg. No. 0-30STET98.
For Bar List & Bending Diagrams, See Dwg. No. 0-30STEB04.
For Details of Wing & Roll, See Dwg. No. 0-30STEB04 - 0-30STEB05.
For Preformed Joint Details, See Dwg. No. 0-30STEB1.
For Details of Elastomeric Bearing Pads, See Dwg. No. 0-30STEB6.

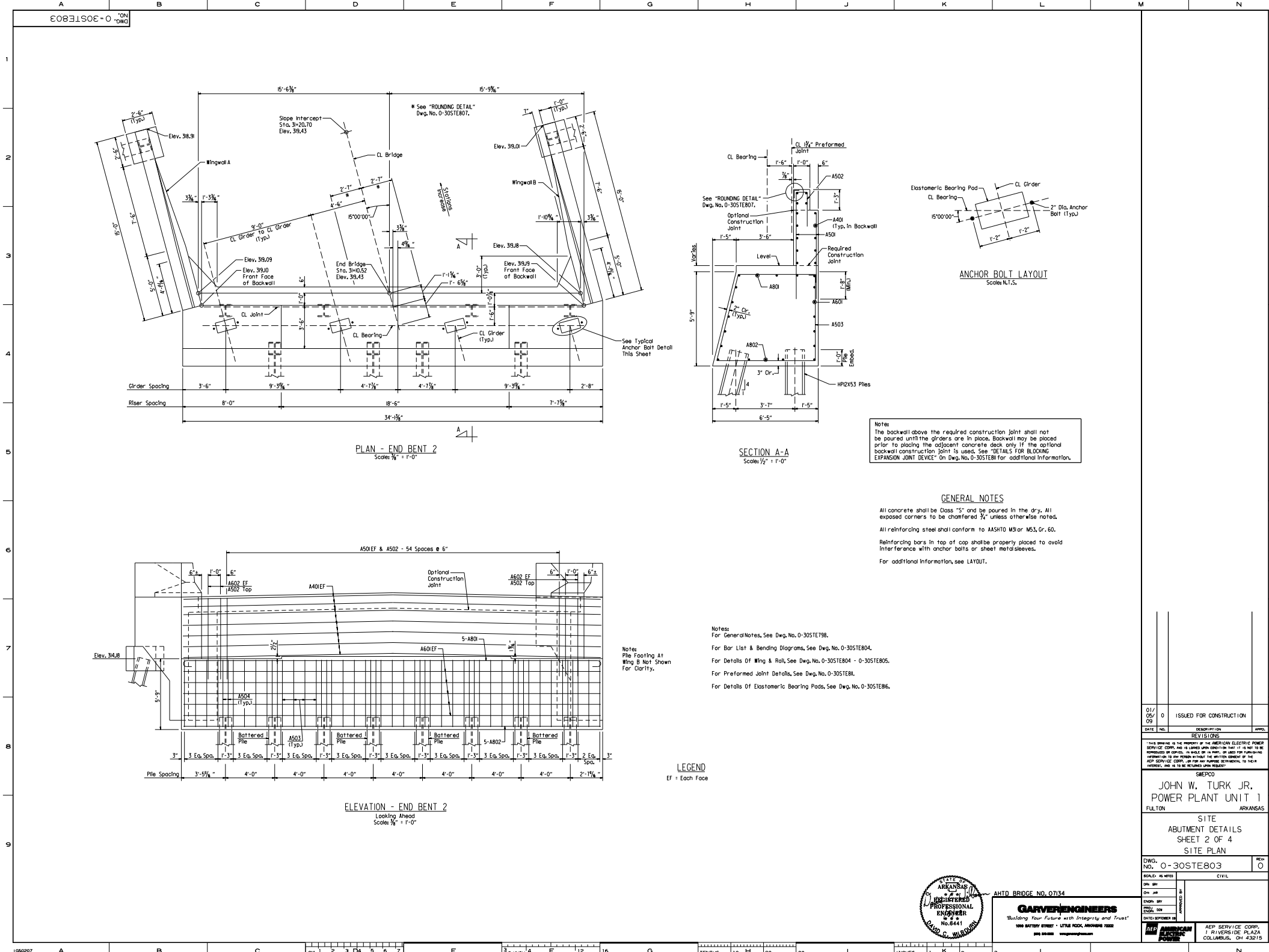
LEGEND
EF = Each Face

DATE	NO.	DESCRIPTION	APPROVED
01/05/09	0	ISSUED FOR CONSTRUCTION	
REVISIONS			
THIS DRAWING IS THE PROPERTY OF THE AMERICAN ELECTRIC POWER SERVICE CORP. AND IS LOANED UNDER CONDITION THAT IT IS NOT TO BE REPRODUCED OR COPIED, IN WHOLE OR IN PART, OR USED FOR ANY PURPOSES WITHOUT THE WRITTEN CONSENT OF THE AEP SERVICE CORP. USE FOR ANY PURPOSES WITHOUT THE WRITTEN CONSENT OF THE AEP SERVICE CORP. IS PROHIBITED AND IS TO BE RETURNED UPON REQUEST.			
SMEPCO JOHN W. TURK JR. POWER PLANT UNIT 1 FULTON ARKANSAS			
SITE ABUTMENT DETAILS SHEET 1 OF 4 SITE PLAN			
DWG. NO.	0-30STEB02	REV	0
SCALE: AS NOTED		CIVIL	
DRN. SHY	AS NOTED	AS NOTED	
CH. SHY	AS NOTED	AS NOTED	
PROP. SHY	AS NOTED	AS NOTED	
DATE: SEPTEMBER 04			
AEP SERVICE CORP. 1 RIVERSIDE PLAZA COLUMBUS, OH 43215			



AHTD BRIDGE NO. 07134
GAFFEN ENGINEERS
"Building Your Future with Integrity and Trust"
1000 BATTERY STREET - LITTLE ROCK, ARKANSAS 72202
501.581.8888 www.gaffen.com

SVT L:\07050330\DRAWINGS\BRC\ABUT.DETAILS.DWG 4:44:08



Notes:
The backwall above the required construction joint shall not be poured until the girders are in place. Backwall may be placed prior to placing the adjacent concrete deck only if the optional backwall construction joint is used. See "DETAILS FOR BLOCKING EXPANSION JOINT DEVICE" on Dwg. No. 0-30STEB81 for additional information.

GENERAL NOTES

All concrete shall be Class "S" and be poured in the dry. All exposed corners to be chamfered $\frac{3}{4}$ " unless otherwise noted.
All reinforcing steel shall conform to AASHTO M31 or M53, Gr. 60.
Reinforcing bars in top of cap shall be properly placed to avoid interference with anchor bolts or sheet metal sleeves.
For additional information, see LAYOUT.

Notes:
For General Notes, See Dwg. No. 0-30STE796.
For Bar List & Bending Diagrams, See Dwg. No. 0-30STEB84.
For Details Of Wing & Rail, See Dwg. No. 0-30STEB84 - 0-30STEB85.
For Preformed Joint Details, See Dwg. No. 0-30STEB81.
For Details Of Elastomeric Bearing Pads, See Dwg. No. 0-30STEB86.

LEGEND
EF = Each Face

01/09/09	ISSUED FOR CONSTRUCTION	
DATE	NO.	DESCRIPTION
REVISIONS		
THIS DRAWING IS THE PROPERTY OF THE AMERICAN ELECTRIC POWER SERVICE CORP. AND IS LOANED UNDER CONDITION THAT IT IS NOT TO BE REPRODUCED OR COPIED, IN WHOLE OR IN PART, OR USED FOR REPRODUCING OR COPIING, IN WHOLE OR IN PART, THE CONTENTS OF THE AEP SERVICE CORP. OR FOR ANY PURPOSES OTHER THAN THOSE FOR WHICH IT IS ISSUED, AND IS TO BE RETURNED UPON REQUEST.		
SMEPCO JOHN W. TURK JR. POWER PLANT UNIT 1 FULTON ARKANSAS		
SITE ABUTMENT DETAILS SHEET 2 OF 4 SITE PLAN		
DWG. NO. 0-30STEB803	NEW	0
SCALE: AS NOTED		
DATE: 09/09/09	BY: JWB	CHECKED: JWB
DATE: 09/09/09	BY: JWB	CHECKED: JWB
AEP SERVICE CORP. 1 RIVERSIDE PLAZA COLUMBUS, OH 43215		



AHTO BRIDGE NO. 07134

GARVER ENGINEERS
"Building Your Future with Integrity and Trust"
1000 BATTERY STREET • LITTLE ROCK, ARKANSAS 72202
501.225.8888 www.garver.com

SYSTEM DATE: 09/09/09
SYSTEM TIME: 10:00:00 AM

BAR LIST-PER SIENT

MARK	NO. REQ'D.	LENGTH	PIN DIA.
A401	14	33'-8"	Str.
A402	6	8'-4"	Str.
A501	110	5'-4"	Str.
A502	59	6'-2 1/2"	2 1/2"
A503	35	22'-0"	2 1/2"
A504	16	15'-3 1/2"	2 1/2"
A601	10	33'-9"	Str.
A602	8	5'-4"	Str.
A603	8	8'-0"	4 1/2"
A604	10	9'-6"	4 1/2"
A801	5	35'-1"	6"
A802	5	33'-9"	Str.
R401	12	14'-8"	Str.
R402	10	3'-11"	2"
R403	16	4'-0"	2"
R601	6	5'-0"	Str.
W401	10	11'-3"	3"
W402	10	12'-4"	3"
W410	2 Each	7'-10" To 5'-0"	Str.
W411	2 Each	9'-11" To 6'-6"	Str.
W418	7	14'-8"	3"
W419	7	14'-8"	3"
W420	7	15'-0"	3"
W601	20	2'-2"	Str.
W602	10	8'-7"	4 1/2"
W701	24	14'-8"	Str.
W702	4 Each	10'-8" To 5'-6"	Str.
W705	4	14'-4"	5 1/4"
W706	4	14'-4"	5 1/4"

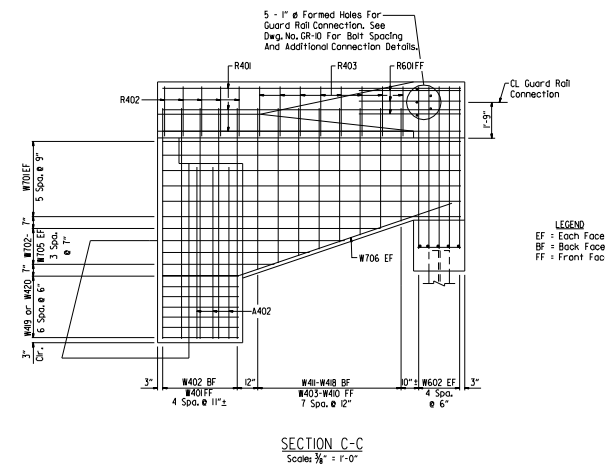
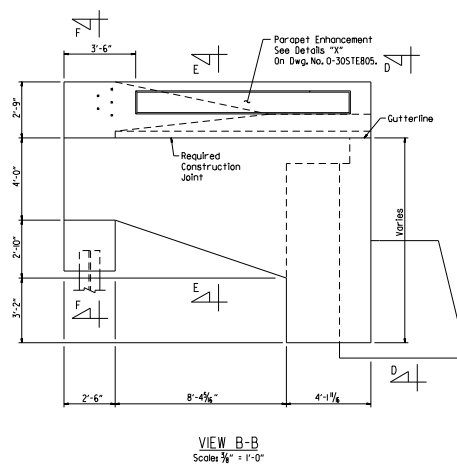
Note: Dimensions of Bars in Bending Diagrams are Out-To-Out.

Number of Bars Shown is For One End Bent Only.

BAR BENDING DIAGRAMS

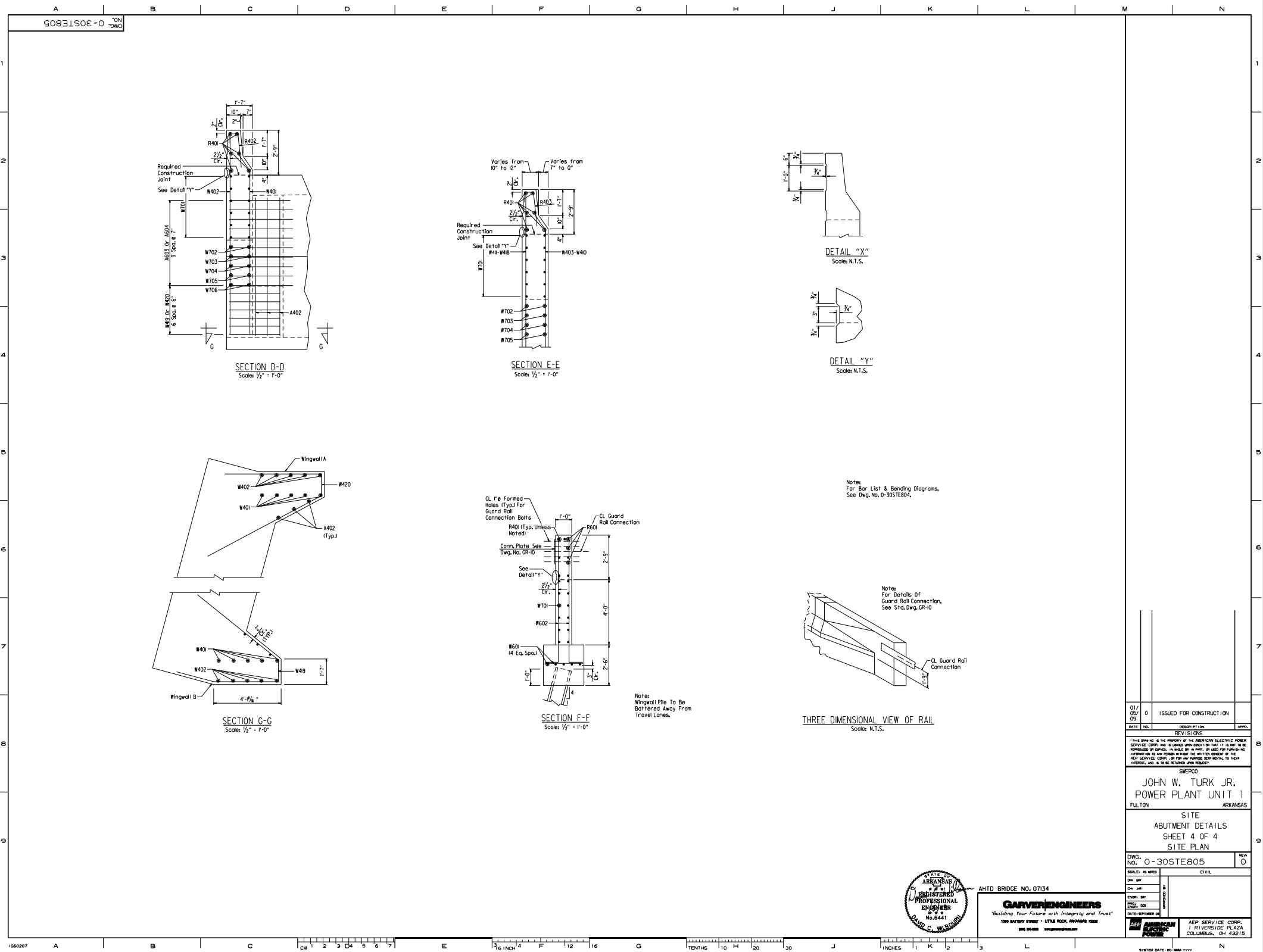
Note:
Dimensions Of Bars In Bending Diagram
Are Out-To-Out.

Number Of Bars Shown Is For One End
Bent Only.



	AHTD BRIDGE NO. 07134		BUILDING NO. _____ CIVIL
	GARVER ENGINEERS <i>"Building Your Future with Integrity and Trust"</i>		PROJECT NO. _____ DATE: SEPTEMBER 04, 2010
	1000 BATTERY STREET • LITTLE ROCK, ARKANSAS 72202 (501) 582-5522 www.garvereng.com		
	AEP AMERICAN ENGINEERING PRACTICE		
	AEP SERVICE CORP. 1 RIVERSIDE PLAZA COLUMBUS, OH 43215		

SYN: L:\07055339\07055339\BREC\ANIMAL DETAIL.DWG 2-5-08



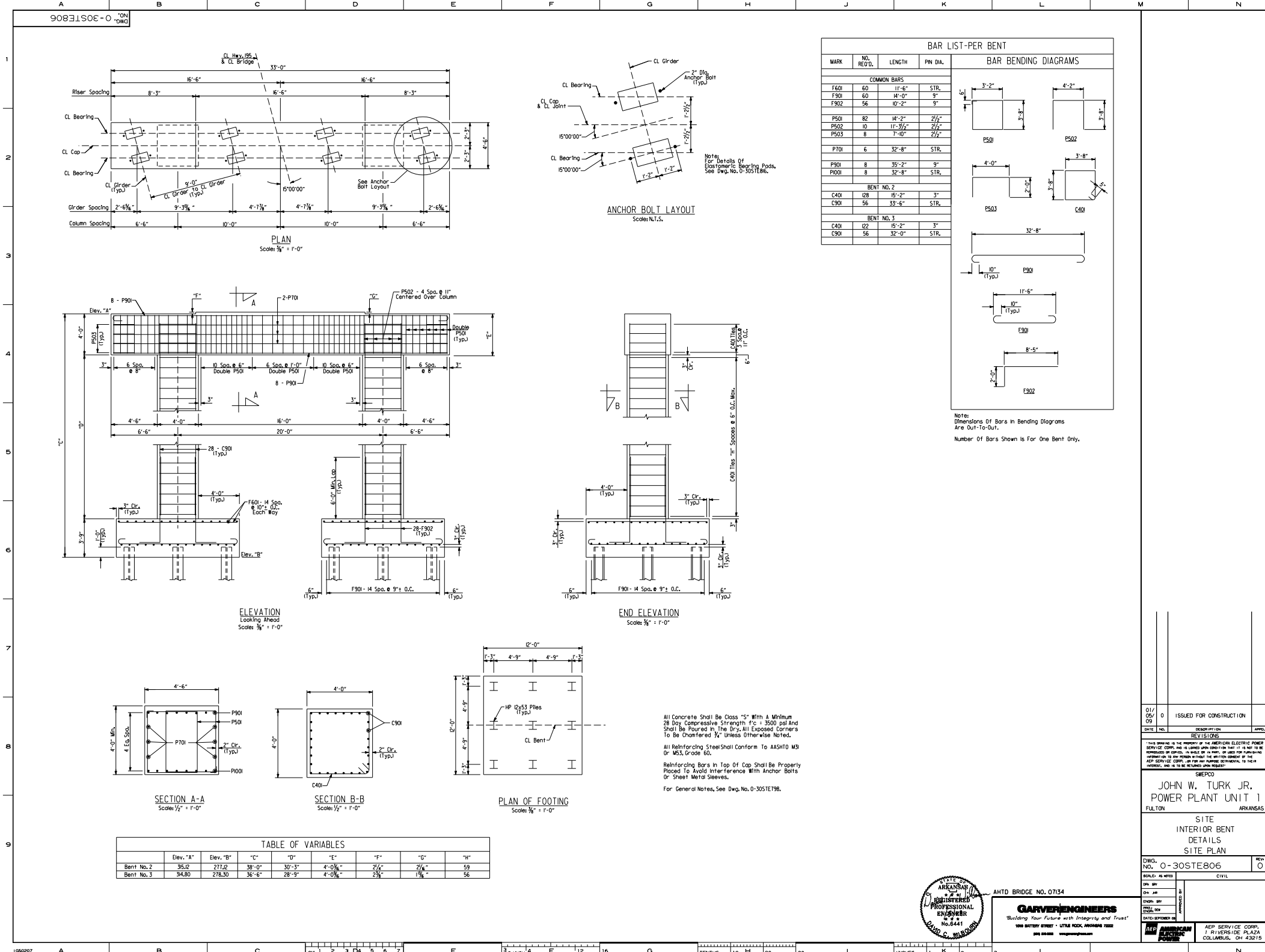
01/05/09	0	ISSUED FOR CONSTRUCTION	
DATE	NO.	DESCRIPTION	APPROVED
REVISIONS			
1. THIS DRAWING IS THE PROPERTY OF THE AMERICAN ELECTRIC POWER SERVICE CORP. AND IS LOANED UNDER CONDITION THAT IT IS NOT TO BE REPRODUCED OR COPIED, IN WHOLE OR IN PART, OR USED FOR ANY PURPOSES WITHOUT THE WRITTEN CONSENT OF THE AEP SERVICE CORP. ANY USE FOR ANY PURPOSES, OTHER THAN THAT FOR WHICH IT IS LOANED, IS PROHIBITED AND IS TO BE REPORTED IMMEDIATELY.			
SMEPCO			
JOHN W. TURK JR.			
POWER PLANT UNIT 1			
FULTON ARKANSAS			
SITE			
ABUTMENT DETAILS			
SHEET 4 OF 4			
SITE PLAN			
DWG. NO.	0-30STE805	REV	0
SCALE: AS NOTED		CIVIL	
DRN. SHY	AS NOTED	DRN. SHY	AS NOTED
CH. AB	AS NOTED	CH. AB	AS NOTED
PROP. SHY	AS NOTED	PROP. SHY	AS NOTED
DATE: 02/01/09	DATE: 02/01/09	DATE: 02/01/09	DATE: 02/01/09
AEP SERVICE CORP.		AEP SERVICE CORP.	
1 RIVERSIDE PLAZA		1 RIVERSIDE PLAZA	
COLUMBUS, OH 43215		COLUMBUS, OH 43215	



AHTD BRIDGE NO. 07134

GARVER ENGINEERS
"Building Your Future with Integrity and Trust"
1000 BATTERY STREET • LITTLE ROCK, ARKANSAS 72202
501.225.8888 www.garverengineers.com

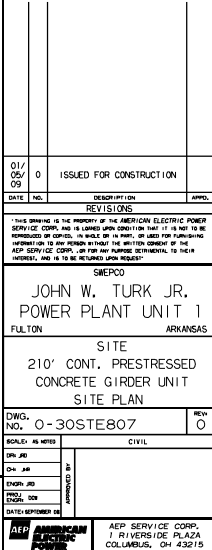


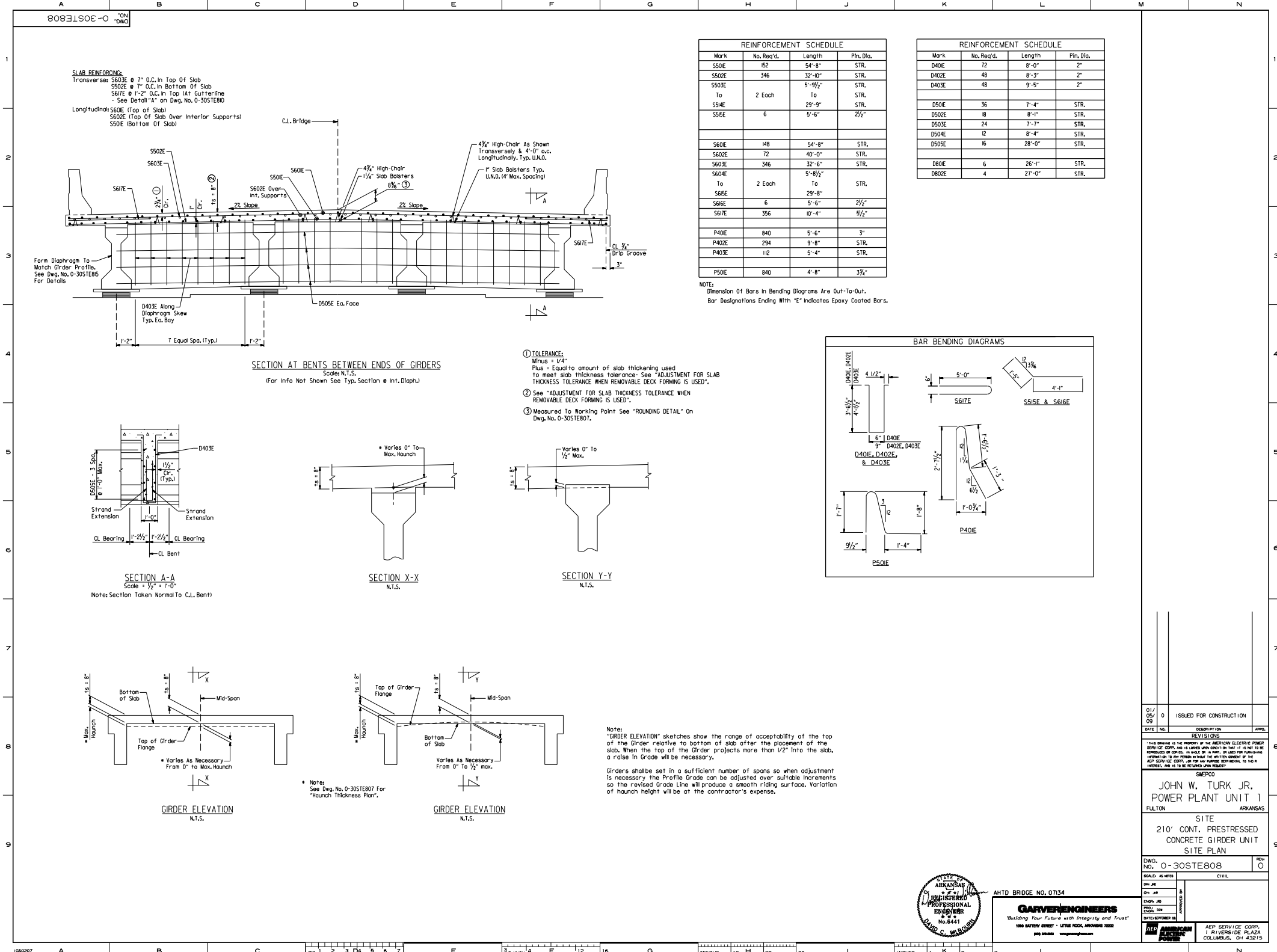


SV L:\07053310\DRAWINGS\BENT\INTERIOR DETAILS.DWG 2/5/08

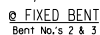
1086207

SYSTEM DATE: 00-MMM-YYYY
SYSTEM TIME: -HH:MM:SS





JRD L:\07050330\DRAWINGS\BRG\5NEPC01YPSEC2.DGN 1-28-08



BEARING PLAN
Scale: $\frac{1}{4}" = 1'-0"$

* Does not include diaphragm weights.
** Includes 24 psf for future wearing surface.

* THIS DRAWING IS THE PROPERTY OF THE AMERICAN ELECTRIC POWER SERVICE CORP., AND IS LOANED UPON CONDITION THAT IT IS NOT TO BE REPRODUCED OR COPIED, IN WHOLE OR IN PART, OR USED FOR FURNISHING INFORMATION TO ANY PERSON WITHOUT THE WRITTEN CONSENT OF THE AEP SERVICE CORP., OR FOR ANY PURPOSE DETRIMENTAL TO THEIR INTEREST, AND IS TO BE RETURNED UPON REQUEST.

SITE
210' CONT. PRESTRESSED
CONCRETE GIRDER UNIT
SITE PLAN

SCALE: AS NOTED	CIVIL
DATE: 08/01/00	

0-4	30
0-4	30

ENGR 300	A-Grader
PROJ	
ENGR 000	

DATE: SEPTEMBER 08

AEP AMERICAN AEP SERVICE CORP.
1 LAWRENCE ST. P.O. BOX 1374
CHICAGO, ILL. 60601-1374

ELECTRIC POWER	7 RIVERSIDE PLAZA COLUMBUS, OH 43215
-------------------	---

SYSTEM DATE - DD-MMM-YYYY

